

ST907 V2.1

7" Industrial Tablet PC



Function and photo



Android 9.0



4G



WiFi



Bluetooth



GPS



Camera



NFC/HF RFID



1D barcode



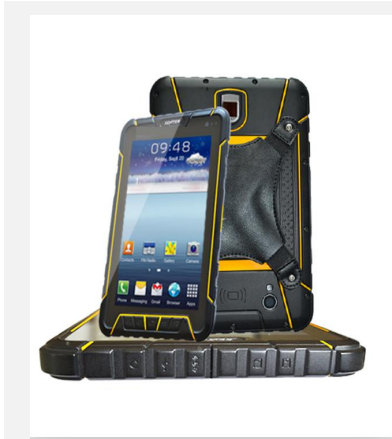
2D barcode



LF/UHF RFID



Fingerprint



Key features

- Android 9.0, Qualcomm SDM450, 8 core 1.8 GHz CPU, RAM 2G ROM 16 G, Micro SD 128G
- IP67 three protection grade, drop resistance from 1.2m
- 7 inch LCD screen, 1280*800 IPS capacitive touch screen
- 1D/2D bar code scanning, LF/HF/UHF RFID reader, fingerprint identification
- Google store and free SDK
- 3G/4G, WIFI, Bluetooth, GPS
- 3.7V, 7200mAh
- CCC/CE/ROSH/FCC/IP67/MIL-STD-810G
- 209*139*19mm, 590g

Specification

General Specification

Display Screen	7 inch LCD screen, 1280*800 IPS screen, capacitive, touch screen
Operating System	Android 9.0
CPU	Qualcomm SDM450, 8 core, 1.8G, RAM 2G ROM 16G, Micro SD maximum 128G
USB port and OTG	5 pin MicroUSB; support OTG (U-disk/Mouse/Keyboard/USB Ethernet cable) Through OTG can meet 100M network port, network card setup, PPPoE dial-up, web browsing. Support OTG extend RS232 serial port
External port	Charge port, headphone port

Protection Grade

Industrial Protection Grade	IP67
Drop Grade	Drop resistance from 1.2m

Wireless Communication

Bluetooth	4.0		
GPS	Support GPS, DBS, GLONASS and professional GPS,Ublox; GPS and Beidou (alternative)		
WIFI	IEEE 802.11b/g/n, 2.G and 5G		
2G/3G/4G	<table><tr><td>European bands: CDMA: BC0 GSM: 900/1800M WCDMA: B1/B8 TD--SCDMA: B34/B39 FDD-LTE: B1/B3/B5/B8 TD-LTE: B34/B38/B39/B40/B41</td><td>American bands: GSM: 850/900/1800/1900M WCDMA: B1/B2/B5/B8 TD--SCDMA: B34/B39 FDD-LTE: B1/B2/B3/B4/B5/B7/B8/ B12/B13/B14/B25/B26</td></tr></table>	European bands: CDMA: BC0 GSM: 900/1800M WCDMA: B1/B8 TD--SCDMA: B34/B39 FDD-LTE: B1/B3/B5/B8 TD-LTE: B34/B38/B39/B40/B41	American bands: GSM: 850/900/1800/1900M WCDMA: B1/B2/B5/B8 TD--SCDMA: B34/B39 FDD-LTE: B1/B2/B3/B4/B5/B7/B8/ B12/B13/B14/B25/B26
European bands: CDMA: BC0 GSM: 900/1800M WCDMA: B1/B8 TD--SCDMA: B34/B39 FDD-LTE: B1/B3/B5/B8 TD-LTE: B34/B38/B39/B40/B41	American bands: GSM: 850/900/1800/1900M WCDMA: B1/B2/B5/B8 TD--SCDMA: B34/B39 FDD-LTE: B1/B2/B3/B4/B5/B7/B8/ B12/B13/B14/B25/B26		

Physical Parameters

Camera	5 MP front camera, 13 MP rear camera with automatic focus and lighting function
--------	---

Keyboard	Android menu, Homepage, Return, Volume, Barcode, ON/OFF, Reset
Headset	3.5mm audio Interface, has mike and telephone receiver
LED indicator light	Support (ordinary flicker, Call fast flicker, missed calls) three status bar
Flashlight Function	Support, can be used for emergency lighting
Gravity sensor	Support
Vibrating motor	Support
Compass	Support
FM	Support
Lithium Battery	3.7V, 7200mAh
Standby	Standby current less than 10mA
Dimension	209*139*19mm
Weight	590g

Environmental Characteristics

Working Temperature	-20°C ~ +50°C
Storage Temperature	-40°C ~ +60°C
Humidity	5%-95% relative humidity; no condensation

Optional function

Barcode Scanning	1D CCD: Motorola SE955
	1D laser barcod scan: Honeywell N4313 (in the host) Zebra EM1350
	2D laser barcod scan: New land NLS-EM3296 (in the host) Honeywell 6603
RFID	NFC (HF) RFID: Working frequency: 13.56MHZ
	LF RFID: 134KHZ LF RFID or 124KHZ LF RFID
	UHF RFID: Working frequency: 840-960MHz(customization of required frequency band)

High precise GPS

Ublox M8N, accuracy 2m

Fingerprint

Support

Standard accessory



Charger



USB cable



Handbelt

Optional accessory



Earphone



OTG device
USB-LAN RJ45



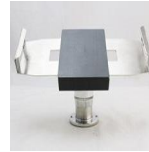
Vehicle Charger



Straps and Touch pen



Bag



Holder on the wall